

THE

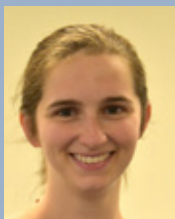
# BRIARWOOD WEEKLY

• AUGUST 3, 2018 •

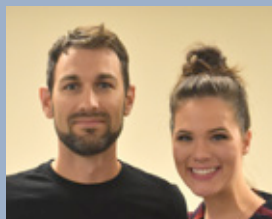
## WELCOME NEW MEMBERS WHO JOINED ON JULY 22



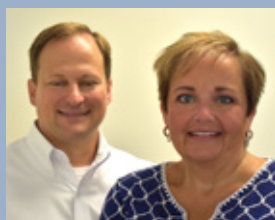
Chuck & Shannon Crawford



Hayley Travers



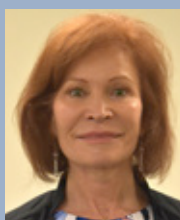
Stephen & Jessica Borklund



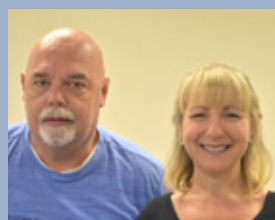
Greg & Jessica Cook



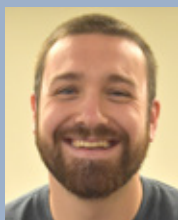
Susan Stofel



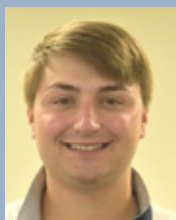
Danese Knott-Craig



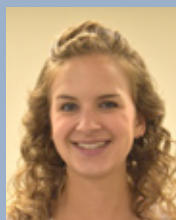
Tommy & Cat Langford



Micah Ehmke



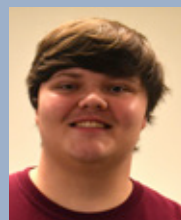
Ben Floyd



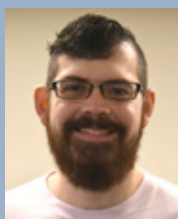
Bethany Haines



Carson Haley



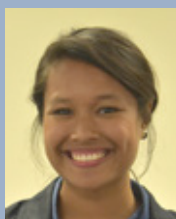
Matthew Handley



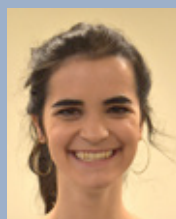
Brian Hines



Brian Jowers



Baylee Wichlan



Margaret Mason



Mike Morrison



Briarwood  
Presbyterian Church, PCA

2200 Briarwood Way  
Birmingham, AL 35243  
205.776.5200 • [info@briarwood.org](mailto:info@briarwood.org)  
[briarwood.org](http://briarwood.org)

BIRMINGHAM CONFERENCE ON THEOLOGY AND LIFE

# ENGAGE

*— your life. your culture.*

## August 11–12

ENGAGE kicks off our Fall ministries with a weekend of encouragement and fellowship!

Join us as we learn how to engage the Word and engage the culture around us with the Gospel and Gospel-centered relationships.



### Guest Speakers:

**Greg Koukl &  
Becky Pippert**



**Purchase Saturday tickets at  
[briarwood.org/engage](http://briarwood.org/engage) or in the Bookstore**



How do you meet people? How do you interact with people and build relationships and friendships? People are always looking for ways to do this, especially missionaries. Sports are a great way! There are so many benefits to playing and competing: improved health, lessons in hard work and perseverance, and learning to deal with losing as well as learning to deal with winning. One of the most important aspects for us as believers in Christ is the

opportunity we have to interact with people. God calls us to be salt and light to the world. There is no greater area of need for the Gospel than the sports field or court. There is so much sin, pride, and selfishness. We can penetrate the sports world with the light of Christ and the hope of the Gospel, and use sports to interact with people to point them to Christ.

There are many opportunities to do this through our Quest Recreation ministry and Briarwood Soccer Club. We have over 500 children and youth ages 5–18 on 50 different teams at BSC this fall. Hundreds of kids come to soccer camp each summer, and we partner with other soccer organizations including Northstar Soccer and Hueytown Soccer in underserved areas of our city. We also go to Brazil each summer to reach kids with the game they love so much.

Please join me in praying for our coaches and leaders as we interact with thousands of people this season. Pray that we are salt and light to the soccer world. And let's all use our areas of interaction to reach people for Christ with a lifestyle of evangelism and discipleship.

*Ryan Leib*

Soccer Club Director

## Early Music Mini Concert



Wed., Aug. 15  
at 7:00 p.m.

Hear the music of Bach, Handel, Corelli and Gregorian Chant in the Worship Center Lobby. Presented by the Briarwood Chamber Ensemble and guest artists Birmingham Baroque and James Overton.

No admission fee;  
a love offering will be received.

# LORD'S DAY WORSHIP SERVICES

## Sunday Morning 8:00 and 10:55 a.m.

“Every Christian an Evangelist”

Mark 5:1–20; John 1:35–42;

John 4:16–19, 25–30, 39–42

Dr. Olan Stubbs

## Sunday Evening 6:00 p.m.

“Jesus, The Bread of Life”

John 6:35–40

Rev. Seth Richardson

## Serving in the Nursery

Sun., Aug. 5

Growing Together

## PRAYER FOCUS

### Church Revitalization Ministry

The next Embers to a Flame Conference will be Sept. 27–29 in Ada, Michigan. Pray the conference will be well attended by leaders within the Orthodox Presbyterian Church as well as the PCA. May the Lord move mightily in the hearts and minds of the pastors and church leaders attending as He builds His church.

<b>Aug 3</b>	Adam & Lisa Venable RUF • Alabama	Ben & Kim Church Mission to the World • Uganda
<b>Aug 4</b>	Jennifer & Wayne Waddell CRU • Alabama	Brandon & Sharlene Coker MAF • Papua New Guinea
<b>Aug 5</b>	Joel & Holly Wallace Special Needs Ministry • Alabama	Bradley & Sara Cordell Mission to the World • Ukraine
<b>Aug 6</b>	Matt & Shelby Wambles Campus Outreach • Alabama	Stella Cox The Evangelical Alliance Mission • Japan
<b>Aug 7</b>	Ed Chan Briarwood Elder	Tim Eller Briarwood Deacon
<b>Aug 8</b>	Sid Borland Briarwood Deacon	Joseph Martin Briarwood Deacon
<b>Aug 9</b>	Stephen Cloud Counseling Dir. • Leadership Team	Grace House Ministries



**Church Revitalization Ministry Prayer** • All are invited to gather for prayer Sun., Aug. 5 at 5:00 p.m. in W202.

**Smiling faces needed!** Help us welcome our visitors by coming to summer visitation Aug. 8 and 22. Meet in FH-A at 6:00 p.m. for dinner, then go out to visit. Contact 776-5301 or [lreese@briarwood.org](mailto:lreese@briarwood.org).

**Pastor's Inquirers' Class** • Begins Aug. 12 for newcomers and prospective members. It includes two Sunday morning classes (Aug. 12 and 19), Wed. night (Aug. 15), weekend class (Sat. morning, Aug. 18) and a luncheon (Aug. 26 – only for those who are joining). Attending does not obligated you to join. For more information or to sign up for the class, call 776-5208 or email [wlong@briarwood.org](mailto:wlong@briarwood.org).

**Persecuted Church Prayer** • Sun., Aug. 12 in G103 at 5:00 p.m. All are welcome to join us to pray for our fellow brothers and sisters in Christ.

**Long-term care seminar** sponsored by Trailblazers. Open for all ages. Come hear Babs Welch Hart on Tues., Aug. 14 at 9:00 a.m. in the FH. Tickets are \$5 in the Bookstore and at [briarwood.org/trailblazers](http://briarwood.org/trailblazers).

**Dementia Patient Caregivers Support Group** • Join us Tues., Aug. 21 from 11:00 a.m.–noon in A201 to share concerns and practical strategies for dealing with the troubling behavior problems and communication difficulties of dementia patients. Call the Pastoral Care office at 776-5227 with questions.

**Host homes needed** • Have an extra bedroom and want to make an impact on a future leader? The Briarwood Fellows is in need of host families for the incoming class of fellows. Contact Seth at [seth@briarwoodfellows.org](mailto:seth@briarwoodfellows.org).

**Donate your teacups and saucers** • We will use them as gifts for our international student, scholar, and community guests at the 3rd International Women's Tea Outreach on Aug. 22. Donations can be left in the Missions Office. For information, email Laura Danner at [ldanner@briarwood.org](mailto:ldanner@briarwood.org).

## BRIARWOOD FAMILIES

Our love and sympathy to **Laine Crook** and family on the death of her mother, **Melva Jones**, on July 24; to the family of **member Horty Jones** on her death on July 26; to **Clay King** and family on the death of his grandmother, **LaVerne Dykes**, on July 27; to **Carl Jernigan** and family on the death of his sister, **Loretta Goodwin**, on July 26; and to **Clay, Will, Marly and Parker King** and family on the death of their grandmother and great-grandmother, **LaVerne Dykes**, on July 27.

**An Invitation from John Haines** • See several ways you can participate in the Briarwood Music Ministry. Go to [briarwood.org/music](http://briarwood.org/music); click the link at the top of the page.

**Crown Ministry** • Save more, become debt free, start investing for retirement, and be a good financial steward. Join a new group during MidWeek, beginning Sept. 5. Contact [dmatthews@briarwood.org](mailto:dmatthews@briarwood.org) to register. Book cost is \$30 for single and \$50 for couple.

**Sunday School Teacher needed** • Two-year-old class. Come experience the joy you can only get through teaching little ones God's love. Contact Cappy Ratcliffe at [nurseryss@briarwood.org](mailto:nurseryss@briarwood.org).

**Briarwood Fall Soccer Season** • For boys and girls age 5–15. Open to the public. Call 776-5114 or go to [briarwoodsoccer.com](http://briarwoodsoccer.com) to register now.

**Pocket Change** • Deposit into wall containers around the church to be used by the Exec. Mercy Ministry Team to distribute food for those in need. Coin canisters are available at the Altadena House to collect at home.

## In the Bookstore



### Just in time for back to school!

Beautiful planners and calendars are here at **20% off!** Come explore the endless possibilities to get organized in style. Want to embellish your schedule? We also have dividers, washi tape, stickers, clips and more!

776-5210 • [briarwood.org/bookstore](http://briarwood.org/bookstore)

**2018–19 School Year** • Are you planning to hold your child back? Please let Raleigh Macoy know so we can make sure to place him or her in the appropriate Sunday School class for the fall. Email [rmacoy@briarwood.org](mailto:rmacoy@briarwood.org).

**Catechism Sunday School class** • A nine-month class for 3rd–6th graders that requires outside work for the student and parents. If your child is interested, register by emailing [rmacoy@briarwood.org](mailto:rmacoy@briarwood.org). Class fills quickly, so register early.

**Theological Training** • BTS Fall semester begins Sept. 4 and registration is now open. Earn a degree or audit a class for your personal enrichment. Short on time? Look for our mini-term in October. Call 776-5356 or visit [bts.education](http://bts.education).

**Job Openings** (more at [briarwood.org/employment](http://briarwood.org/employment)):

**BCS Teaching and other Positions.** Application info and descriptions at: [briarwoodchristianschool.org/employment](http://briarwoodchristianschool.org/employment).

**Children's Program Coordinator.** Full-time Children's Ministry. The Coordinator should have strong leadership skills; be personally engaged and involved in the programs for children; able to recruit, motivate and equip others in this programming area of Children's ministry. Send résumé to Page Dollar at [pdollar@briarwood.org](mailto:pdollar@briarwood.org).

**Junior High Ministry Director.** Full-time position working under the Youth Pastor to include programming, personal ministry, volunteer recruiting and developing, assisting parents, discipling and shepherding students. Send résumé to [jshaw@briarwood.org](mailto:jshaw@briarwood.org) or call 776-5269.

**National Missions Pastor.** Seeking an experienced pastoral leader for the revitalization of churches. He will lead Briarwood's National Missions, Church Revitalization, and Church Planting teams and will be ordained or ordainable in the PCA. Inquire with résumé to Heather McDougall at [hmcDougall@briarwood.org](mailto:hmcDougall@briarwood.org) or 776-5279.

**Women's Ministry Admin Assistant.** The Women's Ministry is seeking a Briarwood member to work part-time alongside our Women's Ministry Director. Proficient knowledge of Microsoft Office is required. Send résumé to Leigh Ann Reese at [lreese@briarwood.org](mailto:lreese@briarwood.org).

**Graduates and Career Ministry Women's Coordinator.** Full-time position requiring the ability to shepherd and disciple young single adult women. Submit résumé and get details by emailing Page Dollar at [pdollar@briarwood.org](mailto:pdollar@briarwood.org).

**Admin Assistant for Pastor Emeritus and Trailblazer Ministry.** 16-hour/week position for a Briarwood member. Good communication skills and working knowledge of MS Office software needed. For details and to apply, email Dave Matthews at [dmatthews@briarwood.org](mailto:dmatthews@briarwood.org).

**Music and Worship Ministry Admin Assistant.** Part-time position for a Briarwood member. Good working knowledge of MS Office software needed. For details and to apply, email Leigh Ann Reese at [lreese@briarwood.org](mailto:lreese@briarwood.org).

**See details on other positions and how to apply by going online to [briarwood.org/employment](http://briarwood.org/employment).**